



FOR IMMEDIATE RELEASE

Contact: [Bethany Hardy](#), 202-277-3848

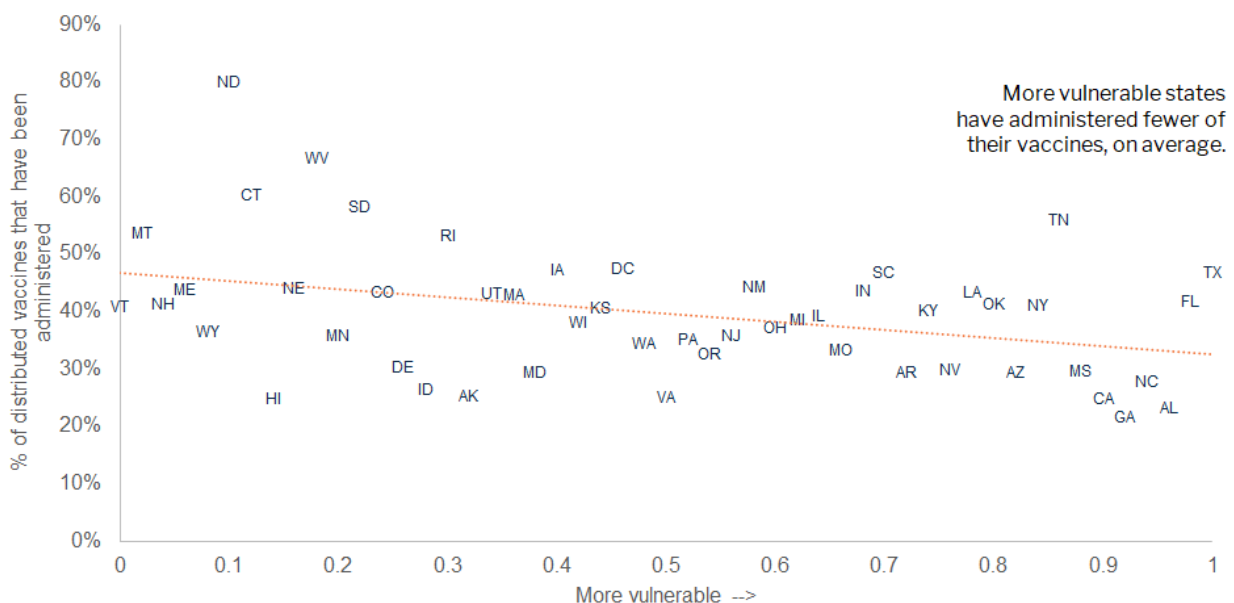
## States most vulnerable to COVID-19 are already falling behind in vaccinations, according to Surgo Ventures analysis

WASHINGTON, January 13, 2021 — States that are especially vulnerable to COVID-19 are already falling behind in COVID-19 vaccinations, according to an analysis using Surgo Ventures' [COVID-19 Community Vulnerability Index](#) and data from state and federal government websites.

Surgo Ventures today released figures showing how, as of January 12, those states that the CCVI rates as being most vulnerable to the negative socioeconomic, structural and health consequences of a COVID-19 outbreak have been slower to administer their doses than their less vulnerable counterparts. The five most vulnerable states are:

- **Texas (vulnerability score of 1.0)**, which has administered 47% of its vaccine doses to date;
- **Florida (0.98)**, which has administered 42% of its vaccine doses;
- **Alabama (0.96)**, which has administered 23% of its vaccine doses;
- **North Carolina (0.94)**, which has administered 28% of its vaccine doses; and
- **Georgia (0.92)**, which has administered 22% of its vaccine doses.

**Fig 1: Proportion of allocated vaccine doses used, by state vulnerability**



Source: Vaccine distribution rates are taken from the [Bloomberg Vaccine Tracker](#), as of January 12, 2021. It can take several days for counts to be reported, depending on the state. Vulnerability is defined by Surgo Ventures' COVID-19 Community Vulnerability Index. The index ranks states with a score of 0 to 1, with 1 being most vulnerable.



“If these vaccination trends continue, it will spell trouble for our most vulnerable communities, which need extra support due to their susceptibility to a range of health-related, socioeconomic, and structural problems,” said Dr. Sema Sgaier, Co-Founder and CEO of [Surgo Ventures](#). “Right now we know, for instance, that people living in vulnerable communities have been 20% more likely to have been diagnosed with COVID, and 30% more likely to have died from it. And it’s only going to get worse: currently, vulnerable communities are nearly 60% more likely to be a hotspot for high COVID case rates.”

**Fig 2: Proportion of vaccine doses used to date, by state**

State	Vulnerability score	% of doses that have been used	State (cont.)	Vulnerability score	% of doses that have been used
Georgia	0.92	22%	Kansas	0.44	41%
Alabama	0.96	23%	Vermont	0	41%
Hawaii	0.14	25%	New York	0.84	41%
California	0.9	25%	Oklahoma	0.8	41%
Virginia	0.5	25%	New Hampshire	0.04	41%
Alaska	0.32	25%	Florida	0.98	42%
Idaho	0.28	27%	Massachusetts	0.36	43%
North Carolina	0.94	28%	Utah	0.34	43%
Maryland	0.38	29%	Louisiana	0.78	43%
Arizona	0.82	29%	Colorado	0.24	43%
Arkansas	0.72	29%	Indiana	0.68	44%
Mississippi	0.88	30%	Maine	0.06	44%
Nevada	0.76	30%	Nebraska	0.16	44%
Delaware	0.26	30%	New Mexico	0.58	44%
Oregon	0.54	33%	Texas	1	47%
Missouri	0.66	33%	South Carolina	0.7	47%
Washington	0.48	34%	Iowa	0.4	47%
Pennsylvania	0.52	35%	District of Columbia	0.46	48%
New Jersey	0.56	36%	Rhode Island	0.3	53%
Minnesota	0.2	36%	Montana	0.02	54%
Wyoming	0.08	36%	Tennessee	0.86	56%
Ohio	0.6	37%	South Dakota	0.22	58%
Wisconsin	0.42	38%	Connecticut	0.12	60%
Michigan	0.62	39%	West Virginia	0.18	67%
Illinois	0.64	39%	North Dakota	0.1	80%
Kentucky	0.74	40%			

Source: Vaccine distribution rates are taken from the [Bloomberg Vaccine Tracker](#), as of January 12, 2021. It can take several days for counts to be reported, depending on the state. Vulnerability is defined by Surgo Ventures’ COVID-19 Community Vulnerability Index. The index ranks states with a score of 0 to 1, with 1 being most vulnerable.

Surgo developed the [COVID-19 Community Vulnerability Index](#) in March 2020 to help federal, state and local leaders target vulnerable communities with more informed and effective interventions. The index—which is [featured as a resource](#) by the CDC—ranks U.S. communities in terms of their vulnerability to COVID-19 based on seven key factors: socioeconomic status; household and transportation; minority status and languages spoken; epidemiological factors; healthcare system factors; high-risk environments; and population density.